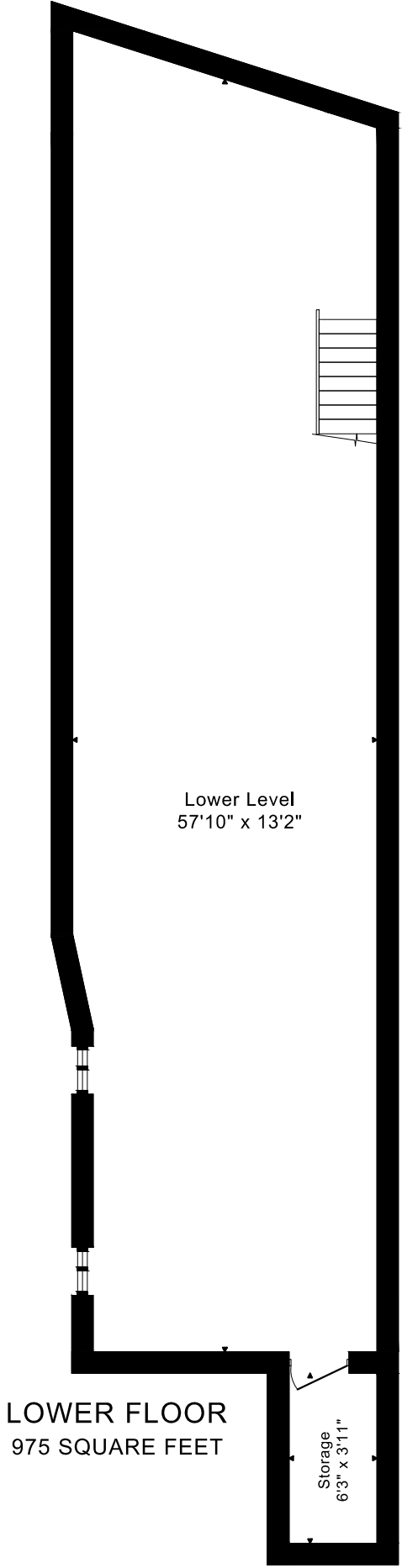
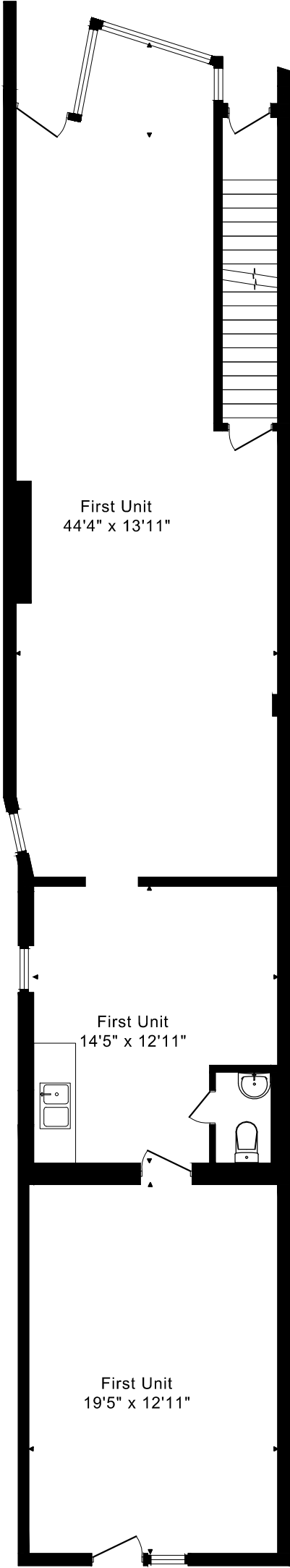


3293 DUNDAS STREET WEST  
FLOOR PLANS

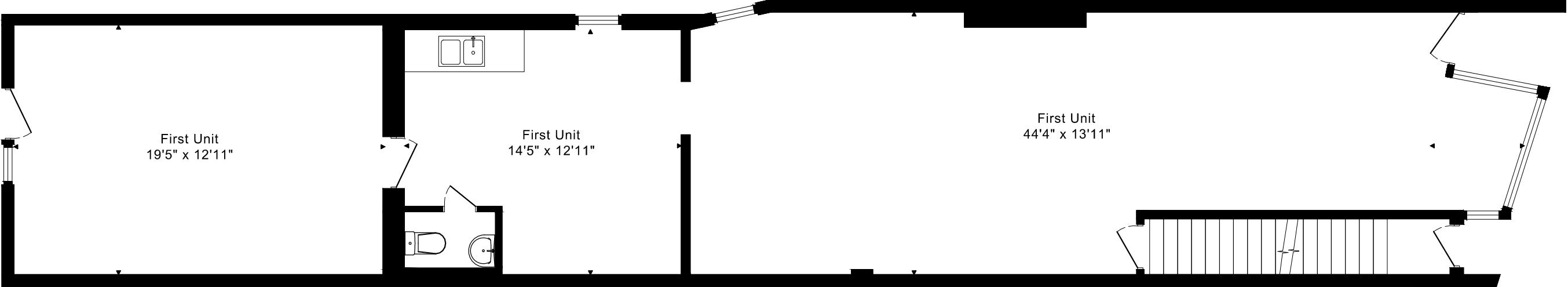


1185 sq ft + 975 sq ft  
BELOW GRADE

CAPTURED ON: 15 OCT 2023  
DIMENSIONS ARE APPROXIMATE AND SHOULD BE CONSIDERED  
ILLUSTRATIVE ONLY.

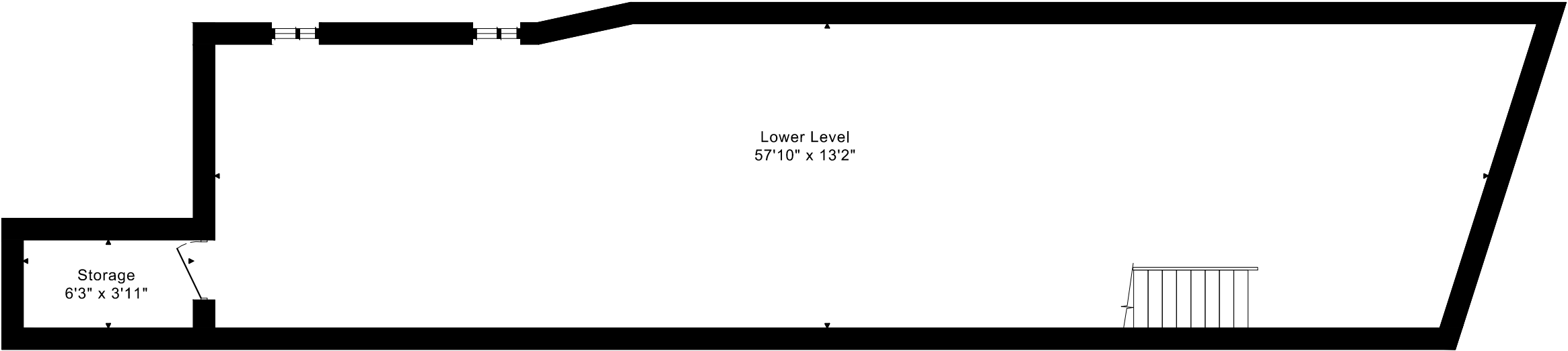
# 3293 DUNDAS STREET WEST FLOOR PLANS

MAIN FLOOR 1185 SQUARE FEET



3293 DUNDAS STREET WEST  
FLOOR PLANS

LOWER FLOOR 975 SQUARE FEET



3293 DUNDAS STREET WEST ROOM MEASUREMENTS

Floor	Room	Imperial				Metric [m]	
		Length		Width		Length	Width
		Feet	Inches	Feet	Inches		
Main	First Unit	44	4	13	11	13,51	4,24
	First Unit	14	5	12	11	4,39	3,94
	First Unit	19	5	12	11	5,92	3,94
Lower	Lower Level	57	10	13	2	17,63	4,01
	Storage	6	3	3	11	1,91	1,19

CAPTURED ON: 15 OCT 2023  
DIMENSIONS ARE APPROXIMATE AND SHOULD BE CONSIDERED  
ILLUSTRATIVE ONLY.

1185 sq ft + 975 sq ft  
BELOW GRADE

The following is a disclaimer regarding the approximate nature of dimensions and floor areas listed in this document:

---

**Disclaimer:**

The dimensions and floor areas listed in this document are provided as an estimate only and are intended to be used for illustration purposes only. These measurements are not necessarily meant to be a perfect representation of the actual space.

**Notes regarding measurement methods and accuracy:**

The utilization of laser measurement technology during the 3D model capturing process at the location provides an accurate representation of floor plans, with a typical margin of error of 3-5%. For the most accurate and official measurement data, it is advised to consult official documents such as MPAC records, builder's pre-construction plans, or data from certified measurement companies.

Exterior wall thickness is included in the calculation of the overall square footage and is considered as a component of the footprint. The wall thickness measurement is obtained onsite whenever possible, or estimated in the event where obtaining onsite measurements is not possible, such as in the case of condominium buildings where wall thickness may vary throughout the building.